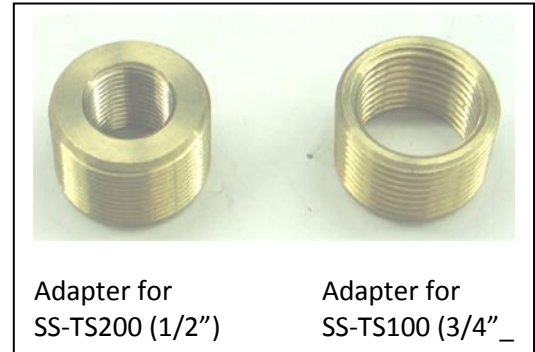
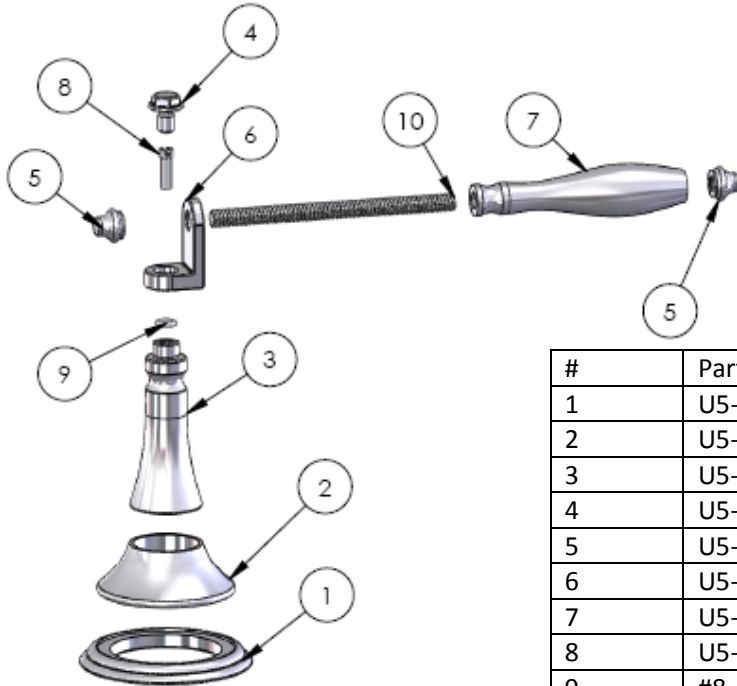


INSTALLATION INSTRUCTIONS FOR

**T7, T8, T9, U3, U4, U5, U6, U7**

**HANDLE TRIMS**



#	Part #	Description
1	U5-esc-bse-rng	Escutcheon base ring
2	U5-esc	Escutcheon
3	U5-pst	Post
4	U5-cap-scrw	Hex cap screw (male threads)
5	U5-cap-nut	Lever cap nut (female threads)
6	U5-L-shape-brkt	"L" shape bracket
7	U5-lvr	Lever
8	U5-set-scrw	Set screw
9	#8-o-rng	#8 o-ring
10	U5-lvr-insrt-rod	Lever insert rod

1. Set escutcheon base ring (1), escutcheon (2), and post (3) onto valve to determine proper height of handle trim. Make sure there is an 1/16" to 1/8" gap between the escutcheon (2) and post (3).
  - a. Tighten the set screw (8) to again ensure that there is a gap between the escutcheon (2) and post (3) so that the post (3) can move freely without bottoming out on the escutcheon (2).
2. For deck set valves:
  - a. tighten all valve connections below the deck
  - b. Assemble the rest of the handle trim.
3. For wall mount valves:
  - a. Refer to the "Handle trim Chart" for proper valve in wall setting.
  - b. Ensure that the correct adapter (1/2" or 3/4") is used for the post (2) to fit onto either a valve with a 1/2" threaded nipple or 3/4" threaded nipple.
  - c. Remove the post (3) and if necessary cut the stem and threaded nipple down to proper length ensuring a 1/6" to 1/8" gap between the post (3) and escutcheon (2).
  - d. If not enough space exists between the post and escutcheon, an extension kit may be required.

**Note the set screw (8) must be tightened all the way and there must be a gap between the escutcheon (2) and post (3) to prevent the handle from loosening up.**