

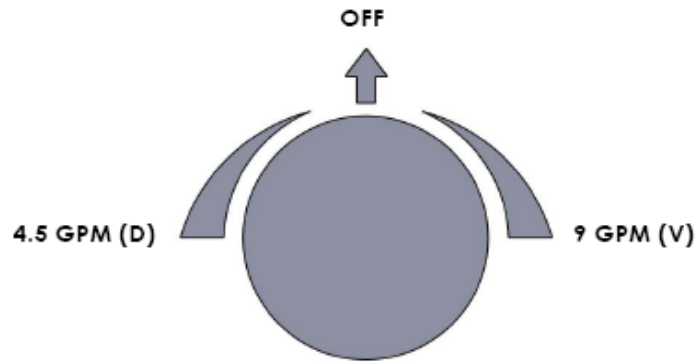
SS-VCWD2

Volume Control with 2-way Diverter

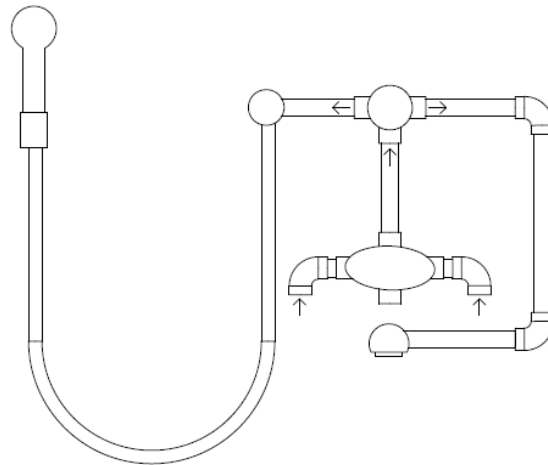
WATERMARK

MADE IN BROOKLYN, NEW YORK

Flow Diagram



Sample Setup



- LINES MAY BE COPPER CONNECTED.
- DO NOT OVERHEAT VALVE.
- IF YOU FEEL THAT THIS WAY MAY BE A PROBLEM, REMOVE THE CARTRIDGE PRIOR TO APPLYING HEAT.

WATERMARK

350 DeWitt Avenue Brooklyn, NY 11207 USA T 718.257.2800 F 718.257.2144 www.watermark-designs.com

Specification from Finished Wall to Tip of Adapter Stem

HANDLE TRIM #	MEASURE- MENT (IN.)
A	3
AA	3 ¼
AQ	2
AX	3
AZ1	2 ½
B4/ B5	3
B9	2 1/8
BB/ CC	3 1/4
CL14/ CL15	2 5/8
CL16	2 1/8
D	3
D5/ D6	2 ½
DD	3 ¼
E/F/G	3
H	3 ¼
HH/I	3

HANDLE TRIM #	MEASURE- MENT (IN.)
IN14/IN16	3
KK	2 ¼
L4/ L5/ L6	1 ¾
N2/N3/N4	2 ¼
N5	2 ½
R1/ R2	1 ½
R3	2 ¼
S	2 ¾
S1/S1A/S2/S3	2 ¼
SA1	2 ¾
SA2/ SW	3
T	2 ½
T1/ T4	2 ½
T6	3
T7/ T8/ T9	3
TIA/TIB	1 3/4

HANDLE TRIM #	MEASURE- MENT (IN.)
TR14/ TR15	3
U	2 ½
U1	3 1/2
U3/U4/U5	3 ¼
U6/U7	3 ¼
U8	1 ¾
V	2 ¼
V1	1 ½
V2/W	2
WA/WB/	2 ½
WC/WD	2 ½
WW	3 ½
X	2 3/4"
XJ/ XM/ XN	2"
XO/XQ	2"
XX	3

HANDLE TRIM #	MEASURE- MENT (IN.)
Y	2 ¾
Y2	2 ¼
YY	3
Z	2 ¾
ZZ	3
BV01/ BV02	3
BV05	2
BV09	3
BV13	2 ½
BV81	2 ¼
CC11	2 ½
CC20/CC21/CC22	2 ¼
CC30/ CC31	3
CC40/CC41/CC42	2 ¼
CC51	1 ¾
CC61	2 ½

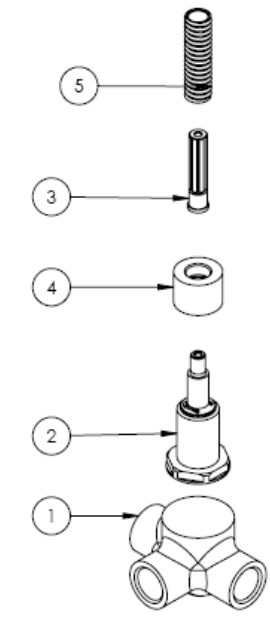
Note: When fitting handle it may be necessary to shorten broach stem and/or threaded nipple to eliminate gap between handle and escutcheon

NOTE THAT STEM EXTENSIONS ARE AVAILABLE IF NECESSARY.

VALVE#: SS-VCWD2

EXTENSION #: SS-EXT20

Parts Breakdown



ITEM NO.	PART NUMBER
1	SS-VCWD2-VALVE-BODY
2	SS-VCWD2-CARTRIDGE
3	SS-VCWD2-ADAPTER-STEM
4	SS-VCWD2-ADAPTER-CAP
5	SS-VCWD2-THREADED-NIPPLE

FOR TECHNICAL SUPPORT PLEASE CALL 718-257-2800

WATERMARK

350 DeWitt Avenue Brooklyn, NY 11207 USA T 718.257.2800 F 718.257.2144 www.watermark-designs.com

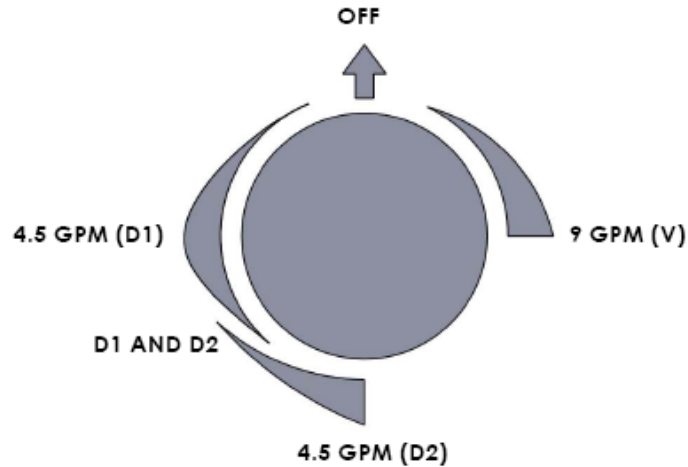
SS-VCWD3

Volume Control with 3-way Diverter

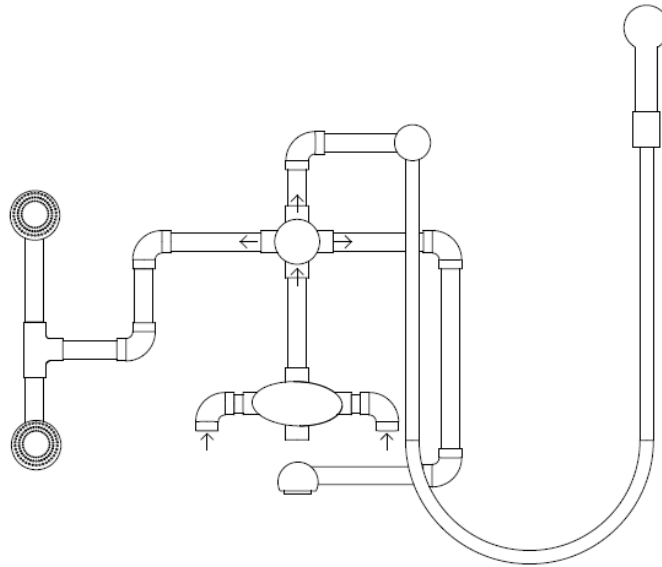
WATERMARK

MADE IN BROOKLYN, NEW YORK

Flow Diagram



Sample Setup



- LINES MAY BE COPPER CONNECTED.
- DO NOT OVERHEAT VALVE.
- IF YOU FEEL THAT THIS WAY MAY BE A PROBLEM, REMOVE THE CARTRIDGE PRIOR TO APPLYING HEAT.

WATERMARK

350 DeWitt Avenue Brooklyn, NY 11207 USA T 718.257.2800 F 718.257.2144 www.watermark-designs.com

Specification from Finished Wall to Tip of Adapter Stem

HANDLE TRIM #	MEASURE- MENT (IN.)
A	3
AA	3 ¼
AQ	2
AX	3
AZ1	2 ½
B4/ B5	3
B9	2 1/8
BB/ CC	3 1/4
CL14/ CL15	2 5/8
CL16	2 1/8
D	3
D5/ D6	2 ½
DD	3 ¼
E/F/G	3
H	3 ¼
HH/I	3

HANDLE TRIM #	MEASURE- MENT (IN.)
IN14/IN16	3
KK	2 ¼
L4/ L5/ L6	1 ¾
N2/N3/N4	2 ¼
N5	2 ½
R1/ R2	1 ½
R3	2 ¼
S	2 ¾
S1/S1A/S2/S3	2 ¼
SA1	2 ¾
SA2/ SW	3
T	2 ½
T1/ T4	2 ½
T6	3
T7/ T8/ T9	3
TIA/TIB	1 3/4

HANDLE TRIM #	MEASURE- MENT (IN.)
TR14/ TR15	3
U	2 ½
U1	3 1/2
U3/U4/U5	3 ¼
U6/U7	3 ¼
U8	1 ¾
V	2 ¼
V1	1 ½
V2/W	2
WA/WB/	2 ½
WC/WD	2 ½
WW	3 ½
X	2 3/4"
XJ/ XM/ XN	2"
XO/XQ	2"
XX	3

HANDLE TRIM #	MEASURE- MENT (IN.)
Y	2 ¾
Y2	2 ¼
YY	3
Z	2 ¾
ZZ	3
BV01/ BV02	3
BV05	2
BV09	3
BV13	2 ½
BV81	2 ¼
CC11	2 ½
CC20/CC21/CC22	2 ¼
CC30/ CC31	3
CC40/CC41/CC42	2 ¼
CC51	1 ¾
CC61	2 ½

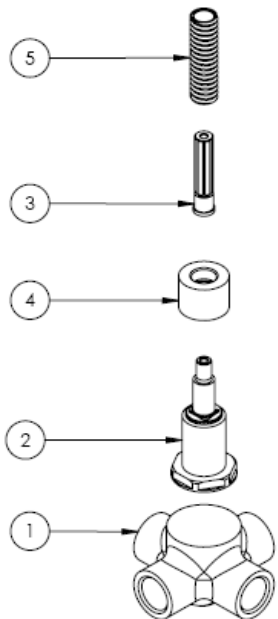
Note: When fitting handle it may be necessary to shorten broach stem and/or threaded nipple to eliminate gap between handle and escutcheon

NOTE THAT STEM EXTENSIONS ARE AVAILABLE IF NECESSARY.

VALVE#: SS-VCWD3

EXTENSION #: SS-EXT20

Parts Breakdown



ITEM NO.	PART NUMBER
1	SS-VCWD3-VALVE-BODY
2	SS-VCWD3-CARTRIDGE
3	SS-VCWD2-ADAPTER-STEM
4	SS-VCWD2-ADAPTER-CAP
5	SS-VCWD2-THREADED-NIPPLE

FOR TECHNICAL SUPPORT PLEASE CALL 718-257-2800

WATERMARK

350 DeWitt Avenue Brooklyn, NY 11207 USA T 718.257.2800 F 718.257.2144 www.watermark-designs.com